



## Red Lodge, Bury St. Edmunds, IP28 8GR

Rent - £1,650 PCM

Deposit - £1,903

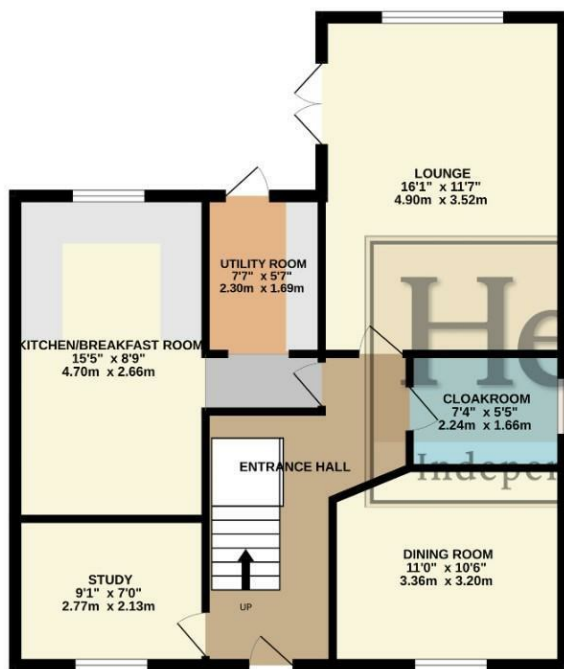
\*\*\*AVAILABLE NOW\*\*\* THREE bedroom DETACHED property in the heart of Red-lodge. The property comprises of kitchen diner, utility room, lounge, separate dining room, study, two en-suites, family bathroom, fully enclosed garden, single garage and off road parking.

- DETACHED HOUSE
- 3.5 BATHROOMS
- UTILITY ROOM
- STUDY
- SINGLE GARAGE
- THREE BEDROOMS
- KITCHEN/ DINER
- DINING ROOM
- REAR ENCLOSED GARDEN
- OFF ROAD PARKING



Council Tax Band: - EPC Rating: C 76

GROUND FLOOR



1ST FLOOR



Whilst every attempt has been made to ensure the accuracy of the floorplan contained here, measurements of doors, windows, rooms and any other items are approximate and no responsibility is taken for any error, omission or mis-statement. This plan is for illustrative purposes only and should be used as such by any prospective purchaser. The services, systems and appliances shown have not been tested and no guarantee as to their operability or efficiency can be given.  
Made with Metropix ©2025

